

## A FAMILY CENTER



St. Mark's Day Care Center is a 501(c)(3) non-profit organization founded in 1968. Our stated mission is to provide a safe and nurturing setting where each child will receive stimulating and challenging learning opportunities.

### **SERVICES FOR CHILDREN & FAMILIES:**

- ✓ Comprehensive Child Care
- ✓ Child development assessment
- ✓ Child Nutrition Program
- ✓ Dental Screening & Education
- ✓ Lead Screening Education
- ✓ Hearing & Vision Screening
- ✓ Parent Resources, Education & Support
- ✓ Family/Child Guidance Referrals
- ✓ Child/Family Literacy
- ✓ Family Community Events
- ✓ Tuition Assistance

### **COMMUNITY CONNECTIONS:**

- ✧ Community Partnerships -Saturday Academy
- ✧ Holiday Baskets for Seniors
- ✧ Family & Community multicultural celebration

## CHILD CARE SERVICES

St. Mark's Day Care Center operates Monday through Friday, year-round, closing for some holidays. The center is open from 6:30am to 5:30pm each day. Each day, an on-site chef prepares two healthy meals and one snack which are offered to children, at no additional cost. Developmentally appropriate daily activities include arts & crafts, literacy, math, science, cooking, field trips, and sports.

### **Infant & Toddlers**

- 6 weeks- 17 months old
- 18 months -24 months old
- 2-3 years old

### **Pre-Schoolers**

- 3 - 5 years old

### **School-Aged**

- 6 - 12 years old
- Before and after school care
- Summer Full-time child care

\*Children with Special Needs and diverse backgrounds are welcomed.

### **Enrollment**

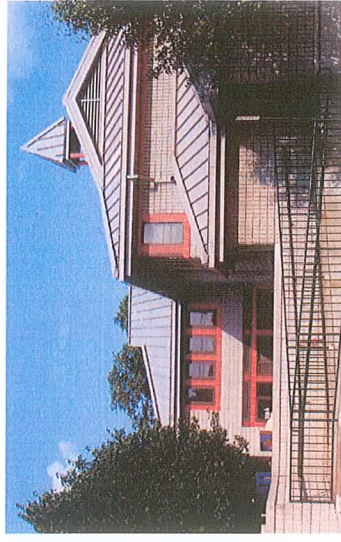
Each family must complete an application, submit the child's medical information and participate in a full interview and orientation. Prior to admission, visiting the assigned child care unit and teacher is part of the interview process.

### **Fees\***

Infant & Toddlers Care.....	\$160.00/wk
Pre-School Care.....	\$120.00/wk
School-Aged Care.....	\$75.00/wk
Summer.....	\$125.00/wk.

\*Subsidized child care is available to families who meet income eligibility criteria. Fees are subject to change.

## STATE OF THE ART FACILITY



### **A CARING, DEDICATED STAFF**

- ✓ Diverse
- ✓ Professional
- ✓ Early Childhood Education Certified
- ✓ Certified in CPR and Child Care First Aide
- ✓ Nurturing
- ✓ Child-oriented
- ✓ Pre-employment screened
- ✓ Ongoing comprehensive staff development & training

### **A SAFE CHILD-CENTERED ENVIRONMENT**



- ✓ In-house video monitoring system
- ✓ Full-time Security Officer
- ✓ On-site Registered Nurse Professional